

PREPARERS

**FRAMEWORK
PLAN AND VISION**
BJARKE INGELS GROUP (BIG)



**LANDSCAPE
ARCHITECT**
OLIN



**INDIGENOUS
OUTREACH**
TAHOMA PEAK SOLUTIONS



**UNIVERSITY OF WASHINGTON
TACOMA**

UW TACOMA 2050 | SUMMARY FEEDBACK REPORT
10/28/2024



UNIVERSITY OF WASHINGTON TACOMA MASTER PLAN 2050

The University of Washington Tacoma (UW Tacoma), excels in professional education, research innovation, and public service, addressing global and regional challenges. Located on a 46-acre east-facing slope overlooking the Port of Tacoma and Mount Rainier, the Tacoma campus enriches over 5,000 students annually from its 22 buildings and more than 1,000,000 square feet of vibrant campus space. Close to museums, historic Union Station, restaurants, shops, and parks, and with convenient access to a light rail station, the campus is a hub of academic and community activity.

As we plan for future growth, the University of Washington Tacoma is working with BIG, OLIN and Tahoma Peak on a master plan that integrates the university's aspirations with community needs. This strategic development will encompass everything from incremental improvements to transformative projects, aiming to ensure a dynamic and harmoniously integrated future for the campus and its urban environment.

What are we doing?

We are developing a master plan that will serve as a framework and roadmap for the University's growth.

Why are we doing this?

To create a shared vision for the future of the campus—how it will look, feel, and function. This vision will guide decision-making and garner support for future development.

How are we doing it?

Our first step is to deeply understand the campus's needs and aspirations. This document highlights the insights we've gathered from campus stakeholders. In the upcoming stages, we'll translate this feedback into a comprehensive vision for the campus's future.

Guided by UW Tacoma's core values, we are crafting a vision for the future of University of Washington Tacoma.



EXPAND ACCESS FOR STUDENTS

Advance student success academically, professionally, and personally.



BUILD COMMUNITY

Partner in advancing strong and diverse communities and build a thriving community that is welcoming and sustainable.



INNOVATION AND SCHOLARSHIP

Expand and support a broad range of teaching, research and creative innovation.



DIVERSITY AND EQUITY

Promote and model inclusive excellence and social justice.



VITALITY

Build a thriving community that is welcoming and sustainable.

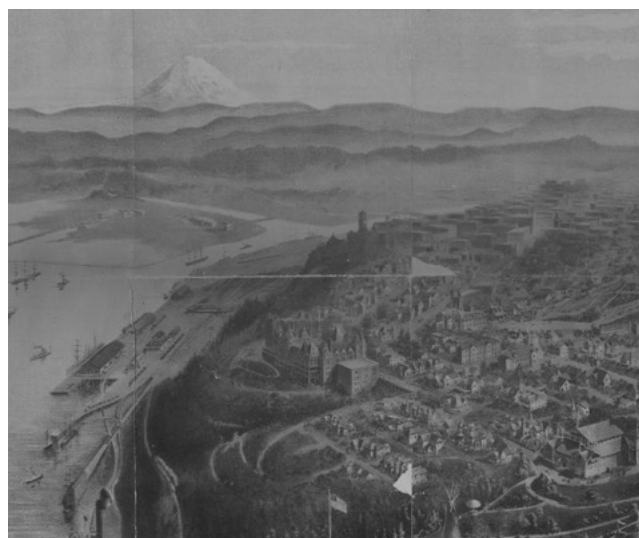
Tacoma, The City of Destiny

Tacoma is dubbed the "City of Destiny" due to its historic role as a pivotal transportation hub and gateway to the Pacific Northwest, driven by its strategic significance and ambition for regional and global commerce.

Time Immemorial



Commencement City



Boom Years



Discrimination in Downtown Tacoma



UW Tacoma Revitalizing Downtown



Before 1800s Tacoma was inhabited by many Puget Sound tribes for many thousands of years, with the Puyallup Tribe still holding land today. Since time immemorial, the tribes have flourished in this region as stewards, as they still do today.

The American City of Tacoma, "The City of Destiny" was first established in 1864, originally with the name of Commencement City. In 1873 it was selected as the terminus of the Northern Pacific Railroad, kicking off its industrial history.

The construction of the Union Station was completed in 1911 and shortly after the city went into an industrial boom during the years of WWI, but struggled during the decades to come.

At the beginning of the 20th century, the area now home to UW Tacoma's campus was a thriving warehouse district populated by a significant Japanese merchant community. However, during World War II, many members of this community were forcibly uprooted and interned.

The campus also borders the Hilltop neighborhood, a home to many black Americans who served at the military base in Tacoma. This community experienced significant disinvestment due to redlining among other systemic racial harms. Urban renewal projects in the 1960s would continue to depopulate this hub of commerce and urbanism.

In 1990, Washington State established the university in Tacoma to cater to the South Puget Sound. UW Tacoma moved into its downtown campus in 1997, with the promise of revitalizing downtown.

In shaping the future of the University of Washington Tacoma, we acknowledge our profound connection to the historical and cultural layers of our location. Established on the ancestral land of the Coast Salish people, particularly the Puyallup Tribe of Indians, our campus community recognizes the complex history of these lands. We are committed to remembering the injustices faced by Indigenous communities post-settlement and honoring the rich cultural history that predates colonization. This acknowledgment guides our ongoing dialogue with local tribes, fostering an inclusive and thoughtful community.

UW Tacoma's campus is rich with cultural landmarks and histories that reveal the difficult truths of our broader community's past. The area once known as Nihonmachi, or 'Japantown', thrived here before suffering immense losses during the internment of Japanese Americans in World War II. Similarly, the nearby Hilltop neighborhood, a historic hub for Black Americans, faced severe disinvestment due to systemic racial policies like redlining. These factors, compounded by urban renewal efforts in the 1960s, have significantly impacted these communities.

Looking to the future, UW Tacoma is committed to recognizing and honoring these communities through educational initiatives and community partnerships. Our master plan and future projects aim to integrate respect for this diverse history into our development plans. By doing so, we ensure that the university not only educates about the past but also actively contributes to building a more equitable future.





Campus Character and Land Use

The campus is characterized by two distinct conditions: a densely developed historic core and a largely underdeveloped uphill area.

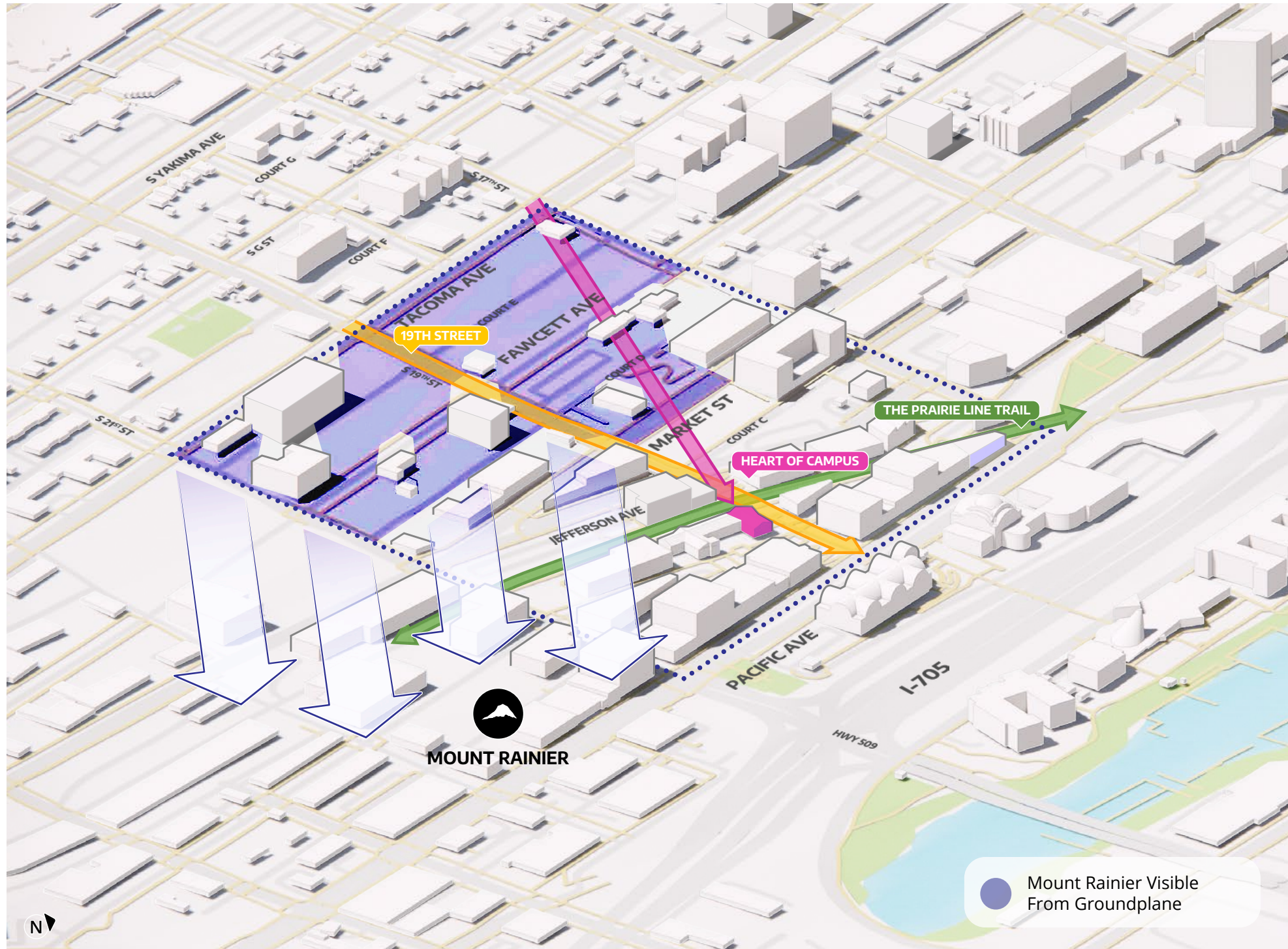
Near the historic-core of the university, the dense urban fabric holds tight streets and circulation routes which navigate the extreme grade. Here, the postindustrial nature of the campus is dominant with brick buildings and metal ornamentation.

Renovations to these structures in recent years have continued to support the adaptive reuse qualities of this zone of the university.

As one moves uphill, a majority of the land is undeveloped and vacant. The university has built a few parking lots in this zone, with most of the remaining buildings being contemporary apartment complexes and fallow urban landscape. This spectrum creates very different conditions and experiences on the campus.

As the owner of most of this vacant land, UW Tacoma has heard and is responding to the community to actively develop empty parcels through this plan. The university understands how impactful the campus is to the neighborhood, and intends for the master plan to offer a clear vision as to how future development will support both the educational mission and the community aspirations.

Sources: Fig.1 - UW Tacoma Entrance at Pacific Avenue, University of Washington at Tacoma. Fig.2+3 - BIG



UNIVERSITY OF WASHINGTON TACOMA

KEY VIEW CORRIDORS



Key Views and Connections

The urban grid and the elevation change afford key axes through the campus. As the urban fabric has developed, these axes have become view and circulation corridors around which the university buildings have been organized.

The Prairie Line Trail, as a former industrial rail-line that linked most buildings in the district, is the central axis which cuts diagonally through the grid of Tacoma. The extent of this route

has been converted into a linear park in the central area of the campus, and there are more efforts to extend the park beyond UW Tacoma. With its gradual slope and wide extents, the Prairie Line Trail is the most realized axis at the university.

By far the most important view for UW Tacoma is the view to the surrounding region. At the top of the campus one can stand at street-level and look straight over every building on campus.

Beyond the historic-core and the Foss Waterway, Mount Rainier can be seen clearly on a sunny day. Although this feature is not as prevalent as the Tacoma Dome on the skyline, seeing the distinctive silhouette of Mount Rainier is a reminder of the close connection Tacoma has to the Pacific Northwest terrain and landscape. Just as the historic industry is evident in the built fabric of the campus, so too is the surrounding nature a critical quality to the university.

Sources: Fig.1 - University of Washington Tacoma, chamomileolya/shutterstock.com. Accessed 9 August 2024.
Fig.2 - Prairie Line Trail, PLACE Studio, place.la/portfolio/prairie-line-trail/, Accessed 14 August, 2024.



The steep slopes and substantial grade change at UW Tacoma provide generous views, but also serious circulation challenges for accessibility.

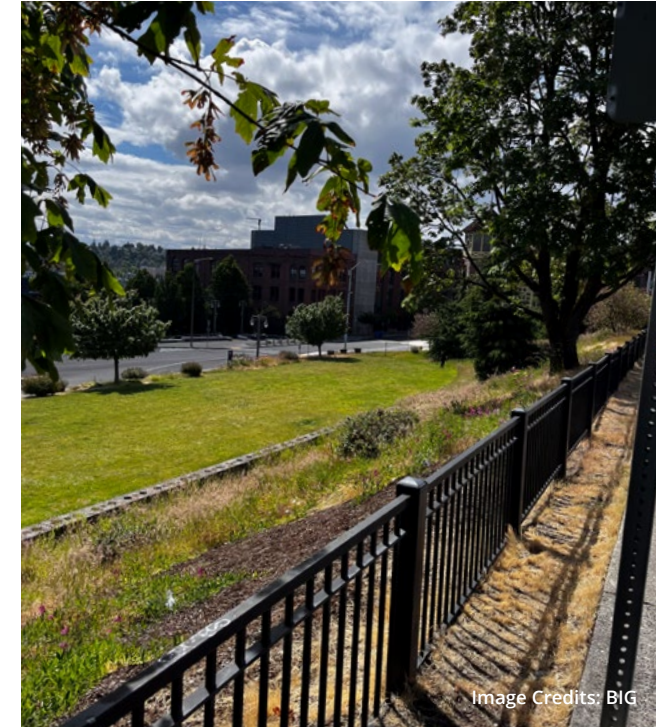


Image Credits: BIG

Campus Grade and Elevation

With over 150 feet of grade change across fewer than four city blocks, the extreme change in elevation on the campus is simultaneously the most challenging and one of the most inspiring elements at UW Tacoma. The intensively-built areas of the university navigate this change with complex ramps and stairs to link the various levels. Most buildings have entrances at multiple stories depending on which side of the building you enter from. Bridges and other structures span across lower paths to support layered circulation routes throughout the campus.

The downhill side of most plots is generally accessible to the street, with steep slopes leading up to the next street or court. The vacant land near the highpoint of UW Tacoma has retaining walls of various materials, evidence of efforts to terrace the landscape and make it occupiable for many years.

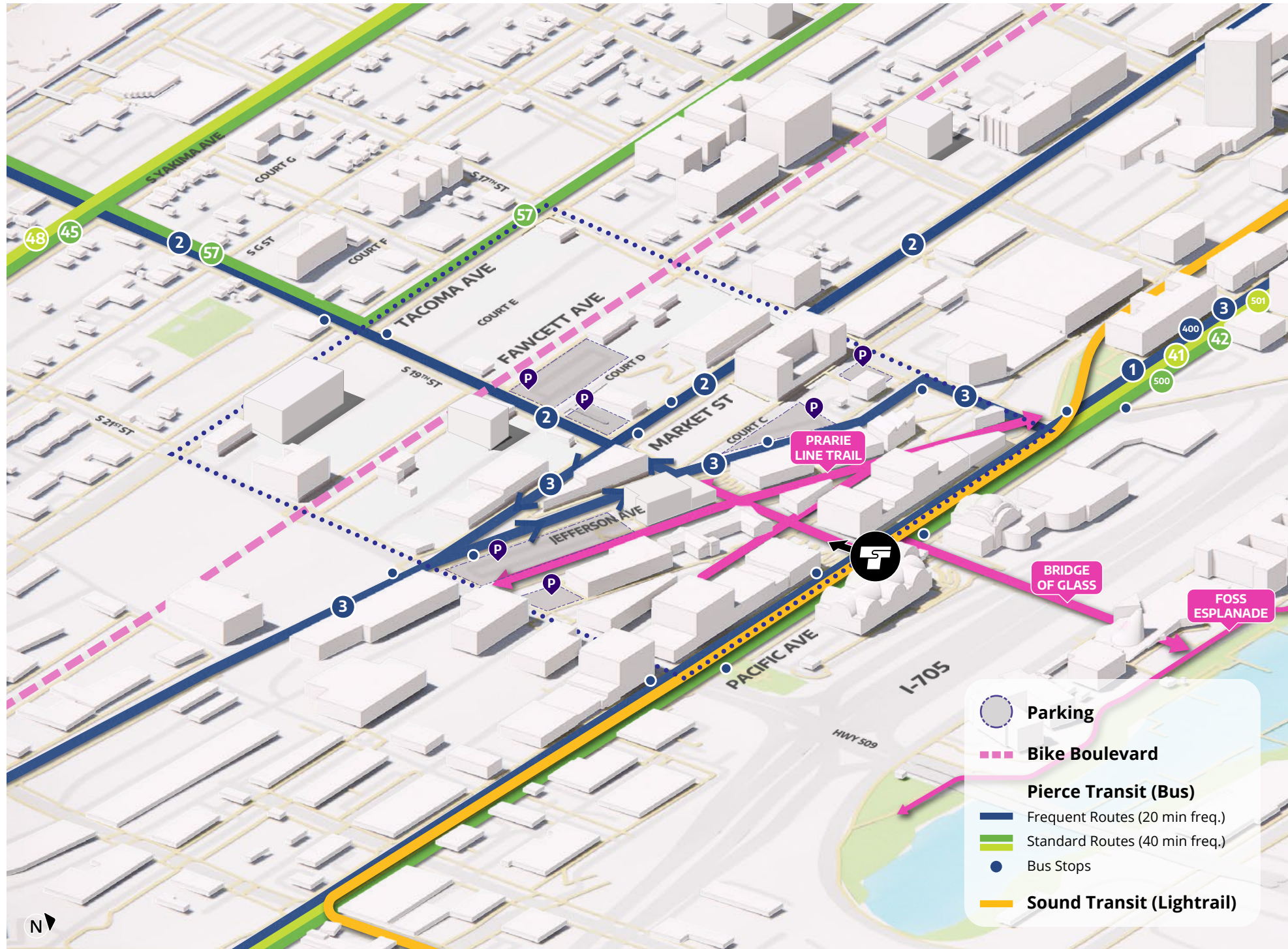


Image Credits: BIG

Transportation on Campus

Although the Prairie Line Trail creates a pedestrian-core to the university, most of the square footage on campus is along various vehicular roads which break-up the blocks and levels. There are bus lines along most streets, with Fawcett Avenue holding the sole dedicated bike boulevard through the campus. The primary access to the Tacoma Convention center also runs through campus, increasing traffic.

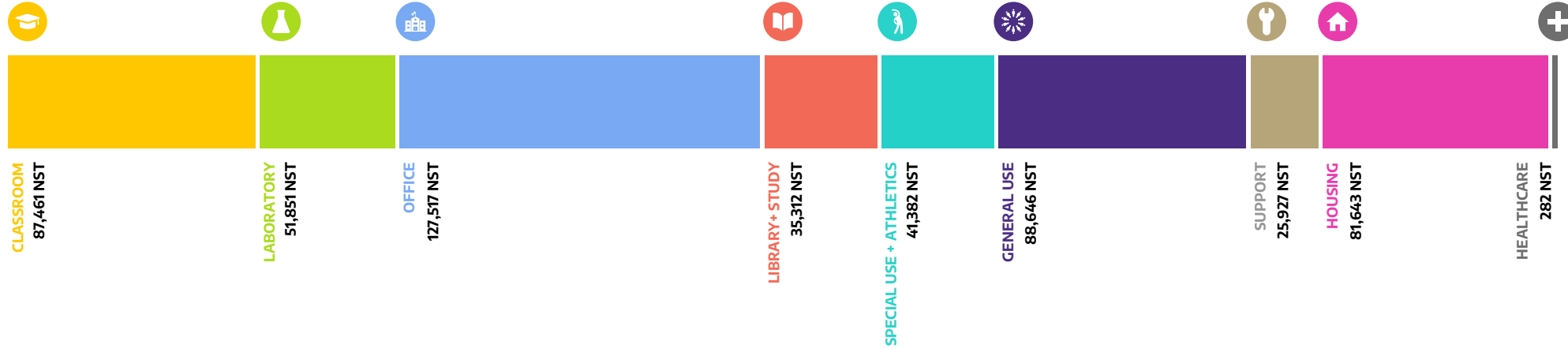
The widest and busiest of the streets run parallel to the slope; however, South 19th Street, which terminates in the center of campus running downhill, can be quite active. The extreme slope of these smaller, perpendicular streets can make them potentially hazardous to pedestrians, as many drivers utilize streets through the campus to reach the Interstate or Highway 509. Maintaining a safe flow of traffic through the university, while adding additional pedestrian routes, is a key goal of future development projects.

With most of UW Tacoma's students commuting to the campus, parking is an active concern. Street parking has been historically easy in the neighborhood, but with increased development and popularity in the area students are increasingly reliant on the university's surface lots. A majority of the lots are uphill from the central core of the university, which is not ideal for access and circulation. New parking structures, accessible paths of travel, and shuttles will be necessary as UW Tacoma seeks to expand parking services.



UNIVERSITY OF WASHINGTON TACOMA

GENERAL BUILDING PROGRAMS AND LOCATIONS



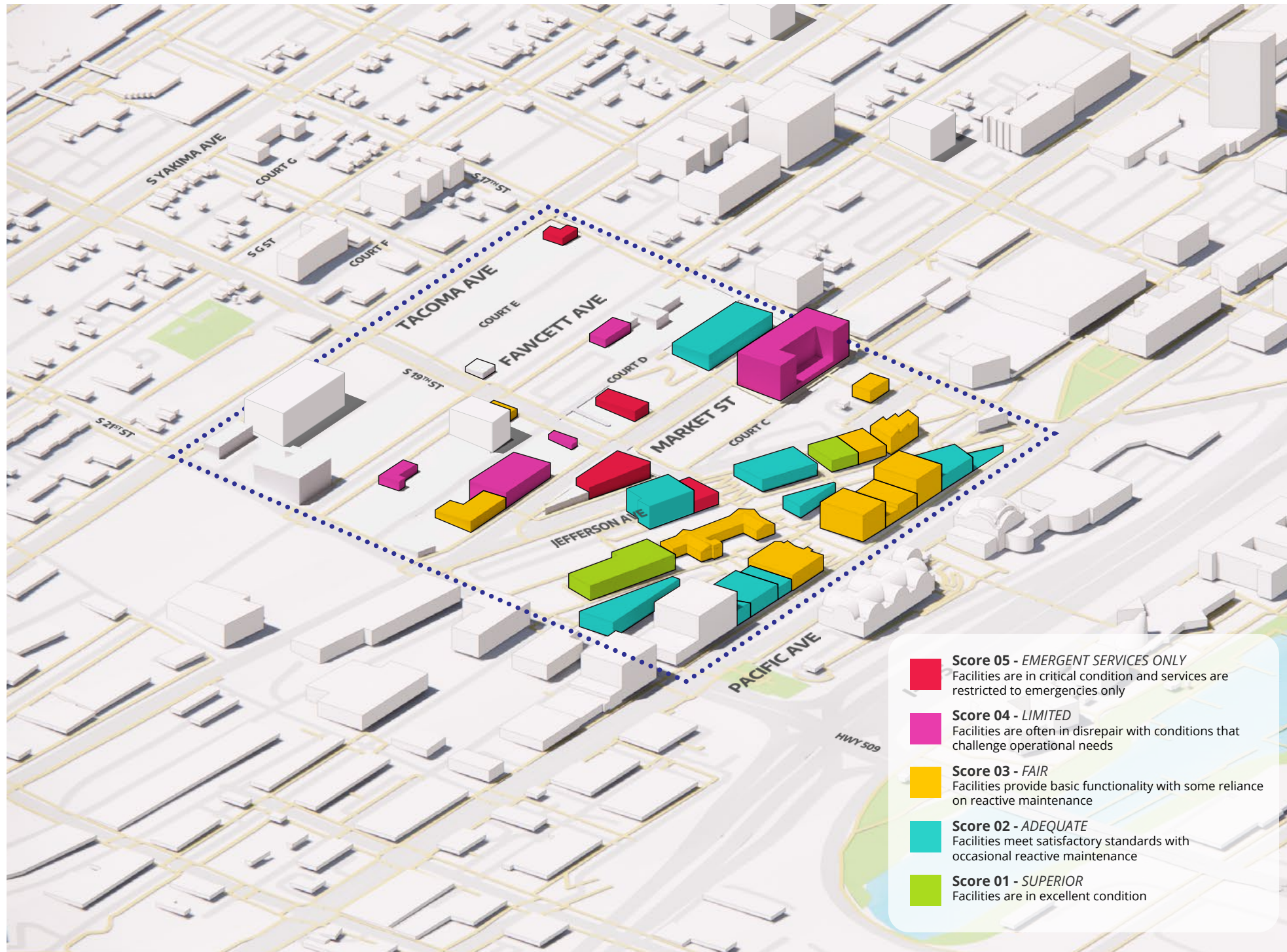
Existing Program Overview

With most campus buildings concentrated east of Market Street, the University's program is primarily focused on academic spaces. In the following pages, we will further break down and analyze the campus's existing programs to identify which areas need to expand to meet current and future population needs.

Current State Inventory:

- The UW Tacoma campus currently has 540,021 NASF (net assignable square feet) of space across all campus facilities (excluding unclassified facilities such as mechanical areas, general circulation, vertical circulation, shafts, and vehicle storage)
- 15% of campus NASF is student residential facilities.
- Instructional facilities account for 24% of existing facilities

- Office and conference meeting space account for 23% of current inventory
- Student-life facilities (general use, special use, recreation, and healthcare) account for 23% of existing facilities

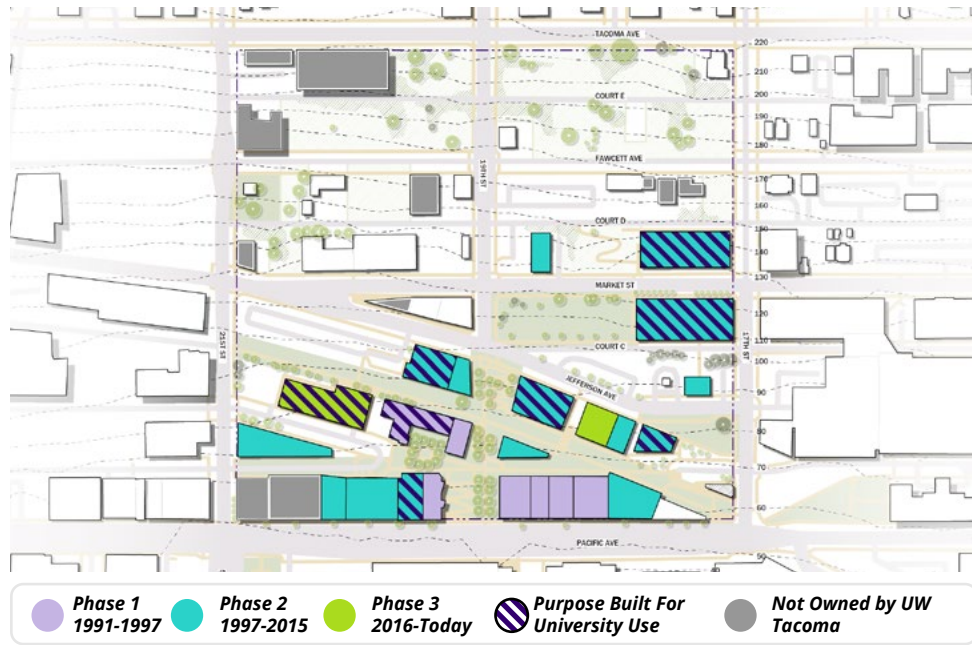


- **Score 05 - EMERGENT SERVICES ONLY**
Facilities are in critical condition and services are restricted to emergencies only
- **Score 04 - LIMITED**
Facilities are often in disrepair with conditions that challenge operational needs
- **Score 03 - FAIR**
Facilities provide basic functionality with some reliance on reactive maintenance
- **Score 02 - ADEQUATE**
Facilities meet satisfactory standards with occasional reactive maintenance
- **Score 01 - SUPERIOR**
Facilities are in excellent condition

Campus Development Phases

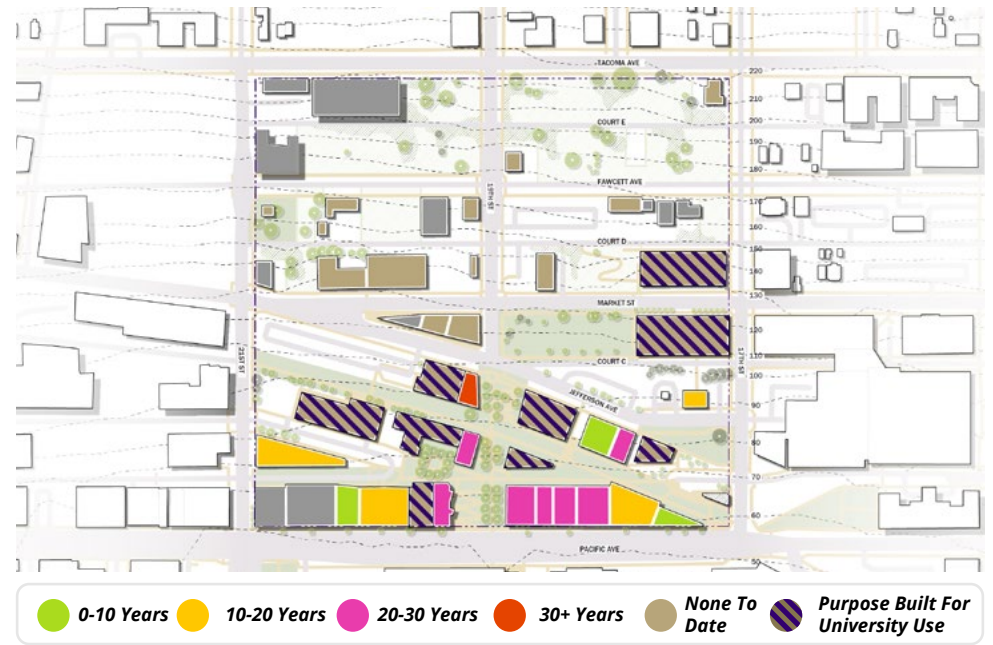
With 22 buildings on campus, and the majority renovated, the campus grew most significantly between 1997 and 2015.

Campus Development Phases



- Phase 1 1991-1997
- Phase 2 1997-2015
- Phase 3 2016-Today
- ▨ Purpose Built For University Use
- Not Owned by UW Tacoma

Years Since Last Renovation



- 0-10 Years
- 10-20 Years
- 20-30 Years
- 30+ Years
- None To Date
- ▨ Purpose Built For University Use

Campus Facilities

Most of the campus features renovated historic buildings, though, as indicated by the purple stripes in the diagrams above, many structures were purpose-built for university use. As UW Tacoma approaches 30 years, some of these purpose-built buildings are now reaching a stage where renovation is needed.

Deferred maintenance programs for existing campus buildings tackle critical safety issues such as seismic vulnerabilities, fire hazards, ADA compliance for accessibility, and essential repairs for aging structures. Most of the main campus buildings are in relatively good condition, scoring between 1-3 on UW Tacoma's Facility Conditions Scale. However, properties outside the central campus are slated for upgrades, renovations, or possible demolitions.

As development extends uphill, the campus is entering a new phase characterized by predominately new constructions. This marks a shift from repurposing the existing historical fabric to building bespoke, contextually appropriate new facilities.





STUDENT ENGAGEMENT | OCTOBER 10, 2024

Please note, this report does not yet include the voices of the student body or the broader community, engagement is on-going and will be reported on **November 12, 2024**

COMMUNITY-DRIVEN PLANNING PROCESS

STEP 1

Analyze existing conditions and interview users.

We ensure all stakeholders in the master plan - students, faculty, staff, leadership, board members, and local communities - are heard. We tour the campus and surrounding areas and conduct interviews with diverse user groups to fully understand the challenges, opportunities, and goals for UW Tacoma 2050.

STEP 2

Conduct creative engagement surveys.

We gather feedback from diverse user groups through creative engagement sessions. These activities allow participants to share their ideas and concerns, raising awareness about the project and encouraging the UW Tacoma community to shape the campus's future.

STEP 3

Lead design workshops to build consensus.

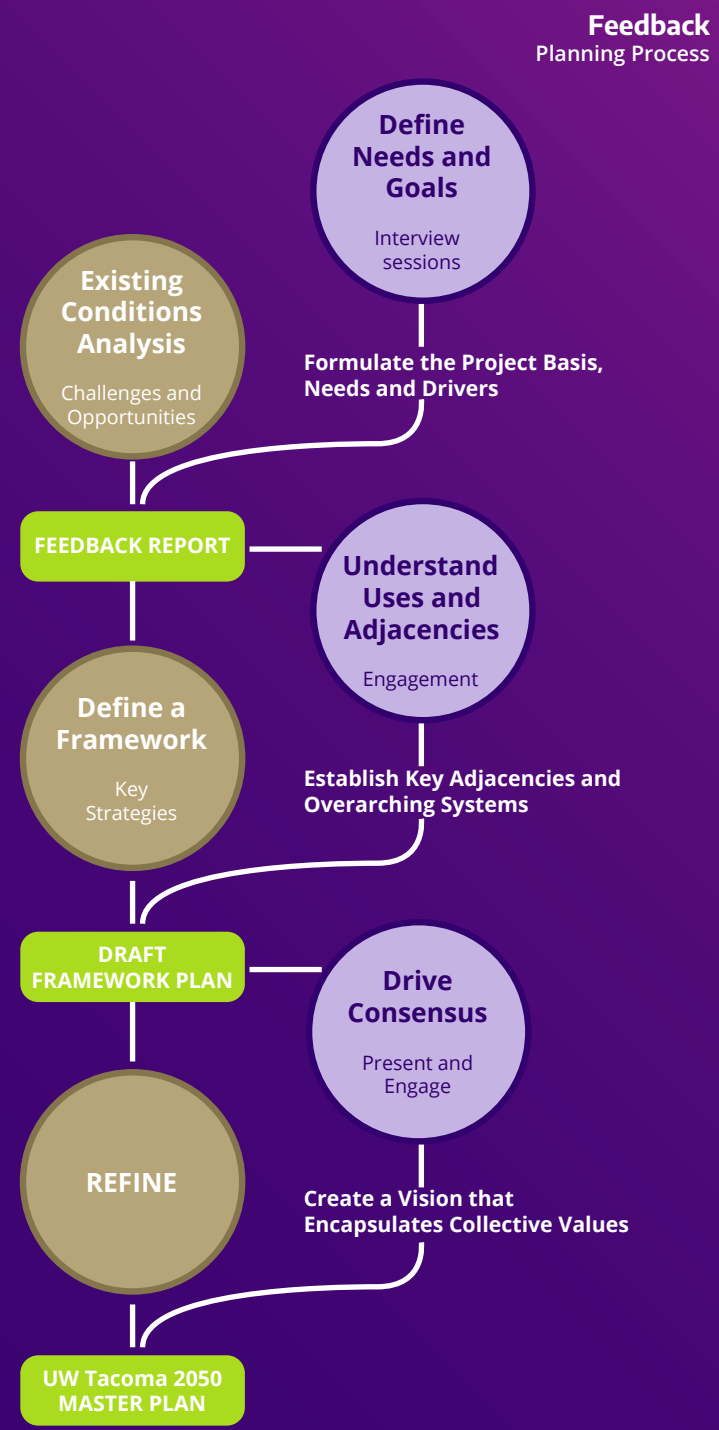
Design workshops bring together user groups who may not typically collaborate to provide feedback on the framework. These sessions help identify conflicts, find solutions, and align priorities. Through a combination of in-person and virtual meetings, group sketch sessions, design reviews, and smaller breakout groups, we collect valuable input to refine the final framework plan.

WE ARE HERE!

1

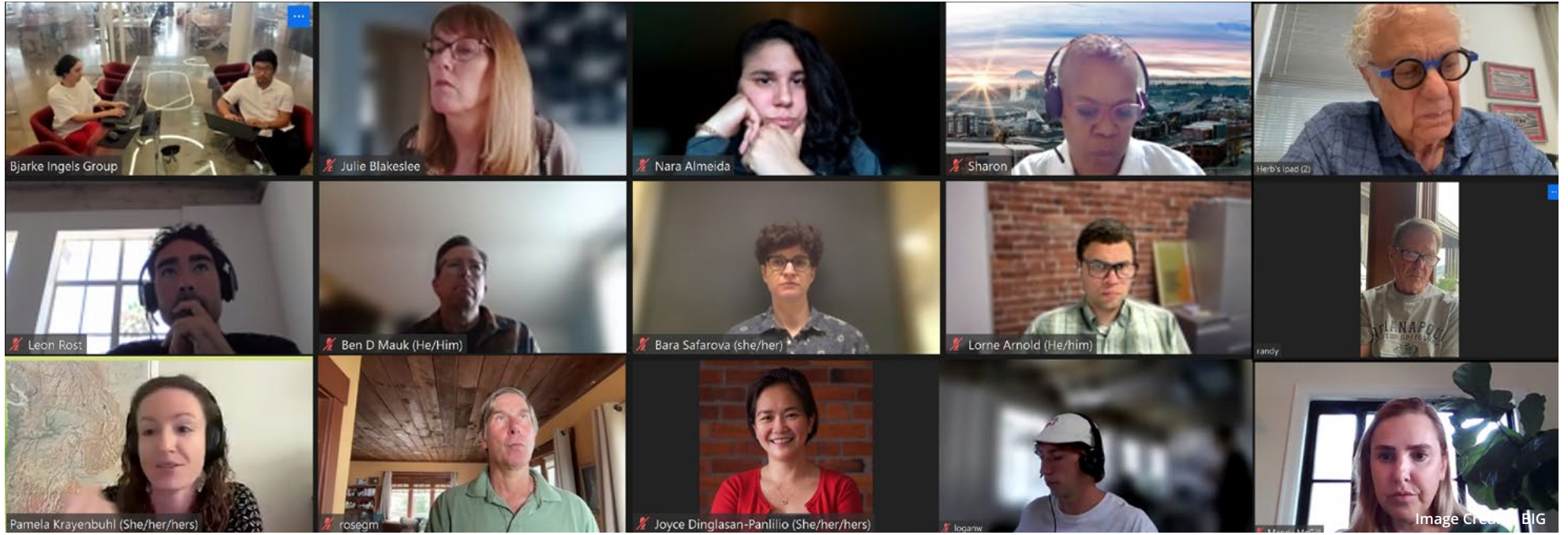
2

3





PLEASE REFER APPENDIX OF FULL REPORT FOR DETAILED NOTES ON ENGAGEMENT



ONLINE INTERVIEWS FOR ROUND 01 OF ENGAGEMENT | SUMMER 2024

Round 01 Engagement

For the first round of engagements, our feedback collection process involved hosting 10 online interview sessions with a diverse group of stakeholders, including university leadership and faculty. The goal of these interviews was to gain a comprehensive understanding of the existing conditions, identify key needs, and explore the university's vision for the future of UW Tacoma.

The following pages provide an overview of the insights gathered during these initial interviews. As the project progresses, we will continue to engage with stakeholders to ensure the vision reflects UW Tacoma's collective view of the campus's future.

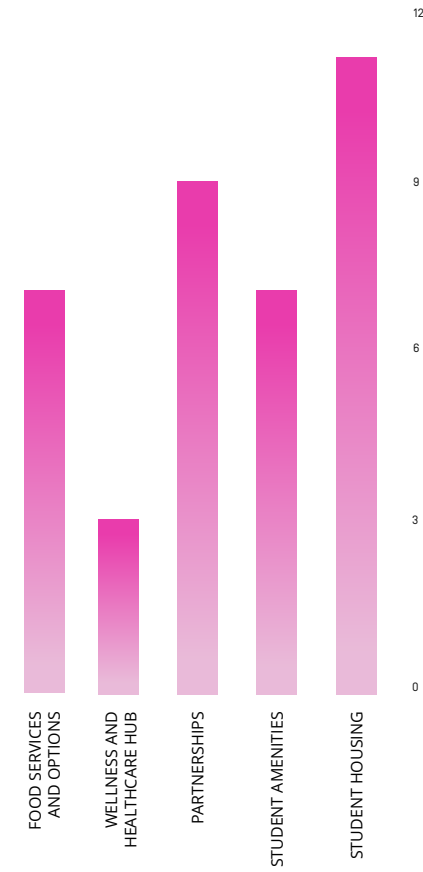
Please note: this feedback overview does not yet include the voices of the student body or the broader community, engagement is on-going and will be reported on November 12, 2024

This input is crucial in shaping our strategic planning and ensuring that the university's development aligns with our aspirations and those of our community.



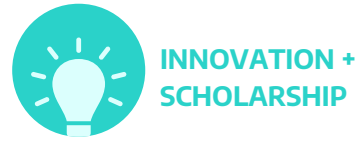
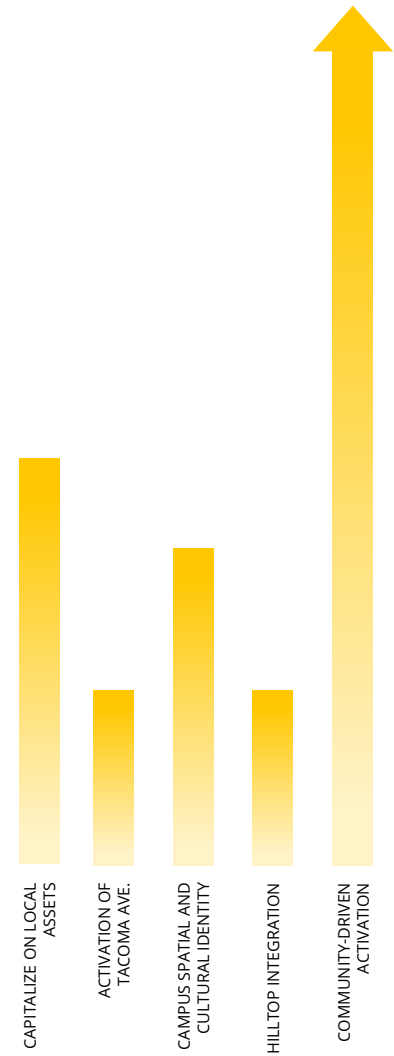
EXPAND ACCESS FOR STUDENTS

WHAT PROGRAMS HELP CLOSE EQUITY GAPS AND SUPPORT STUDENT WELLNESS AND GROWTH?



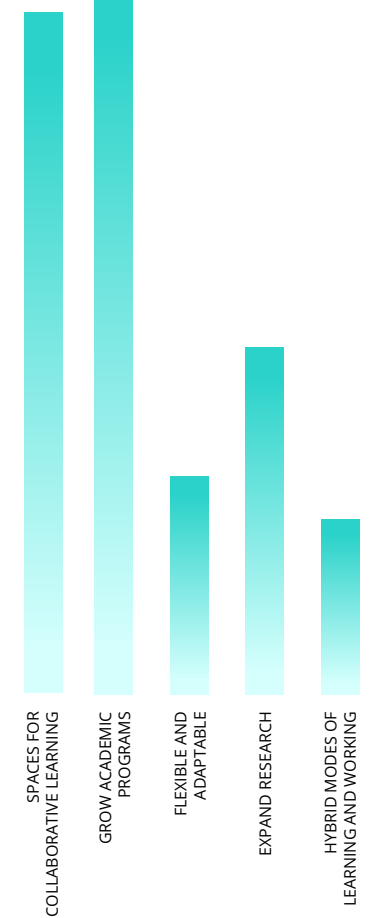
BUILD COMMUNITY

HOW CAN THE CAMPUS SERVE COMMUNITY?



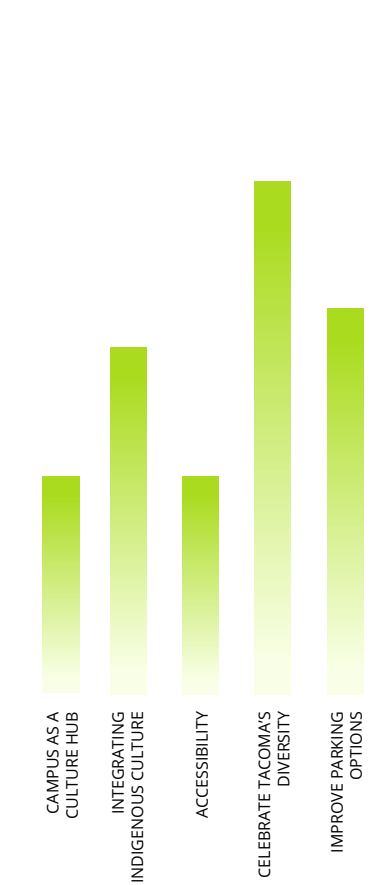
INNOVATION + SCHOLARSHIP

WHAT TYPE OF LEARNING SPACES FOSTER COLLABORATION AND INNOVATION?



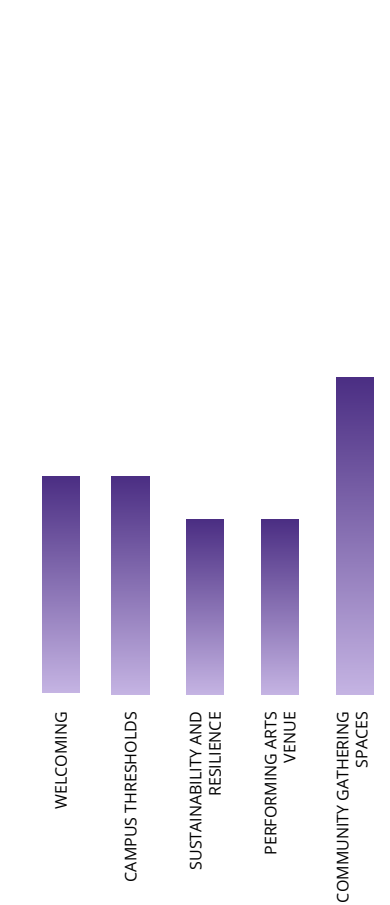
DIVERSITY AND EQUITY

WHAT COULD A FULLY CONNECTED AND DIVERSE CAMPUS LOOK LIKE?



VITALITY

WHAT TYPES OF SPACES FOR THE COMMUNITY ENCOURAGE ACTIVATION AND WELCOMING?



What We Heard | Online Interviews Summer 2024

Project Working Teams, Executive Leadership, Faculty, and Advisors were interviewed to discuss the vision for the campus's future. Each interview focused on key topics such as expanding academic programs, enhancing campus infrastructure, fostering community engagement, and promoting the cohesive and flexible growth of the campus. The feedback from various stakeholders underscores the importance of aligning campus development with community needs and ensuring that UW Tacoma remains a vibrant, inclusive, and resilient institution.

Through the analysis of this feedback, BIG identified the top priorities and the key elements stakeholders see as essential for campus growth. To summarize, we categorized the feedback into the five Strategic Plan Values: Expand Access, Build Community, Innovation and Scholarship, Diversity and Equity, and Vitality. The graph to the left illustrates the frequency with which these needs and aspirations were mentioned in our varied conversations.

Most notably, we heard the following needs most often during the interview sessions:

- 1. Student Housing:** Transitioning UW Tacoma from a primarily commuter campus to one that offers a vibrant, residential experience, which is expected to foster greater student engagement and community integration.
- 2. Food Servicing and Student Amenities:** Enhancing food services and student amenities as part of UW Tacoma's broader efforts to improve campus life and create a more supportive environment for students.
- 3. Community-Driven Activation:** Engaging with the Tacoma community to ensure that campus developments

are not only beneficial to the university but also aligned with the needs and interests of the local population.

- 4. Growth of Academic Programs:** To meet regional needs and the University's mission, UW Tacoma commits to growing high-demand fields such as Engineering, Nursing and Healthcare Leadership, and Arts and Sciences.
- 5. Flexible Spaces for Collaboration:** Developing multi-use spaces that can easily transition between different functions, such as classrooms, meeting areas, and study zones, to facilitate both individual work and collaborative projects. Spaces designed to be adaptable, supporting various teaching methods, learning styles, and group activities.
- 6. Celebrate Tacoma's Diversity:** Celebrating Tacoma's diversity by integrating the rich cultural backgrounds of the local community into campus events, programs, and spaces, fostering an inclusive atmosphere that honors and recognizes the diverse histories and contributions of the Tacoma community.
- 7. Welcoming Campus Thresholds:** Designing campus entrances and borders that are inviting and accessible, helping to establish a clear sense of arrival and making the university more approachable for both students and the public.




EXPAND ACCESS FOR STUDENTS

The University of Washington Tacoma is committed to broadening access to education by enhancing its facilities and resources to support student success academically, professionally, and personally. Here are the key initiatives:

INCREASE ON-CAMPUS HOUSING: UW Tacoma aims to expand on-campus housing from 300 to about 1,000 beds, accommodating 15% of the student population. This expansion is crucial for enhancing student retention, graduation rates, and the overall campus experience.

SUPPORT AMENITIES: To improve campus life and promote student well-being, UW Tacoma plans to integrate essential amenities such as food services and dining facilities into new developments. These amenities are vital for creating a supportive environment that encourages both academic and personal success.

ENHANCE STUDENT WELLNESS SERVICES: UW Tacoma will need a wellness and healthcare hub that includes a health center, expanded therapy services, diverse testing spaces, and affordable, high-quality childcare. These services are designed to ensure that students have the resources they need to thrive.

STRENGTHEN PARTNERSHIPS: UW Tacoma is actively building partnerships with local organizations, including neighboring healthcare providers, to offer internships, collaborative projects, and other opportunities that benefit both students and the community. These partnerships are essential for integrating the campus into the local ecosystem, expanding academic programs, and enriching the resources available to students and faculty.

These initiatives underscore UW Tacoma's dedication to providing the support and resources necessary for students to succeed in all aspects of their lives.



BUILD COMMUNITY

UW Tacoma focus is on creating a vibrant, integrated campus that capitalizes on local assets and fosters strong community ties. The university aims to define a distinct campus spatial and cultural identity while actively engaging with the Hilltop neighborhood and broader Tacoma community. This includes developing public and gathering spaces that encourage interaction, hosting community-driven events, and aligning academic programs with local industry needs. UW Tacoma emphasizes genuine outreach, particularly with local tribes, and is committed to promoting social justice through its academic offerings and community partnerships. These efforts are designed to ensure that the campus not only serves as an educational hub but also as a vital, inclusive part of the local ecosystem.

PUBLIC AND GATHERING SPACES: The development of public and gathering spaces on campus is seen as crucial for building a sense of community. This includes creating welcoming open spaces that encourage interaction between students, faculty, staff, and the broader community. There is also a focus on using these spaces for community events, such as roundtables on local issues and casual gatherings.

SUPPORTING LOCAL BUSINESSES: UW Tacoma focuses on ensuring that campus development benefits not just the university, but also the local economy. This includes collaborating with local businesses to create partnerships that provide mutual benefits, such as opportunities for student internships, experiential learning, and community events that draw people to the area.

PROMOTING SOCIAL JUSTICE: UW Tacoma's approach to academic program development includes a focus on social justice, particularly in how the university serves the regional community. This commitment to social justice is reflected in the university's academic offerings, partnerships, and overall mission.



INNOVATION + SCHOLARSHIP

By expanding academic programs in high-demand fields, developing flexible and adaptive learning spaces, and promoting interdisciplinary collaboration, UW Tacoma aims to enhance its academic offerings and create dynamic learning environments.

CLASSROOM NEEDS AND LEARNING SPACES: UW Tacoma recognizes the need for more medium-sized classrooms (40-80 students) and is focusing on creating flexible, multi-use spaces that accommodate different learning models, including hybrid and collaborative environments.

ACADEMIC PROGRAM EXPANSION: The university is expanding programs in high-demand fields like engineering, science, nursing, and education, with careful planning for the necessary space and resources to support regional economic needs.

EXPANSION OF LAB AND RESEARCH SPACES: UW Tacoma plans to expand lab spaces, particularly in health sciences and nursing, to enhance hands-on, experiential learning. These expansions will be aligned with industry needs through partnerships with external organizations.

EXPERIENTIAL LEARNING OPPORTUNITIES: UW Tacoma is committed to increasing hands-on learning opportunities by designing small, collaborative spaces that foster innovation and real-world problem-solving.

INTERDISCIPLINARY AND COLLABORATIVE LEARNING: The university aims to break down disciplinary silos, promoting interdisciplinary collaboration through projects that encourage holistic learning and innovation across fields of study.



DIVERSITY AND EQUITY

UW Tacoma is committed to fostering a diverse, equitable, and inclusive campus that serves as a regional cultural hub. The university's initiatives reflect this commitment to social justice and community engagement:

CULTURAL HUB AND ENGAGEMENT: UW Tacoma aims to leverage its reputation to enhance connections between the campus and the community. Initiatives include hosting community-focused events, enriching the campus's cultural identity, and creating a welcoming environment for all.

CULTURAL INTEGRATION: The university places importance on integrating cultural elements within the campus environment. This involves participating in cultural events, establishing physical symbols of Indigenous relationships, and reflecting the diverse cultures of its students and community in the campus setting.

SUPPORT FOR INDIGENOUS STUDENTS: UW Tacoma is strengthening relationships with local tribes by engaging them in academic and cultural events and expanding partnerships that support Indigenous students and communities. UW Tacoma is exploring ways to honor Indigenous culture on campus, including physical symbols like a longhouse, as well as incorporating Indigenous elements in landscaping, architectural design, naming of spaces, and shared stewardship practices.

INCLUSIVE SPACES AND PROGRAMS: UW Tacoma is focused on creating inclusive social and entertainment spaces to enhance student engagement and foster belonging. Projects like an outdoor performing arts venue are central to improving the student experience.

EQUITY IN ACCESS AND ENGAGEMENT: The university is enhancing campus accessibility to ensure an inclusive environment. This includes improving the physical accessibility of buildings and pathways, accommodating the campus's sloping terrain.



VITALITY

UW Tacoma is dedicated to creating a thriving, sustainable, and resilient campus community that is welcoming to everyone:

ENHANCING CAMPUS LIFE: UW Tacoma is enhancing student engagement and well-being by developing vibrant outdoor spaces, social areas, and amenities. Efforts to improve accessibility and navigability through better signage are also underway to make the campus more welcoming.

COMMUNITY INTEGRATION AND DEVELOPMENT: UW Tacoma seeks to integrate more deeply with the Tacoma community through developments that connect the campus with local neighborhoods, ensuring that university projects benefit the community and contribute to its vitality.

CAMPUS SAFETY AND INFRASTRUCTURE: UW Tacoma is addressing campus safety and infrastructure needs by ensuring reliable power supplies, enhancing parking and transportation options, and maintaining essential building systems to support a growing population.

SUSTAINABILITY EFFORTS: Committed to sustainability, UW Tacoma is improving waste management, expanding composting and recycling, and transitioning to an all-electric vehicle fleet by 2030. The university is also exploring alternative energy sources and addressing environmental contamination with ongoing remediation efforts.

These points highlight UW Tacoma's commitment to building a thriving, sustainable, and resilient campus community that is welcoming to students, faculty, staff, and the broader public, while also being prepared for future challenges.

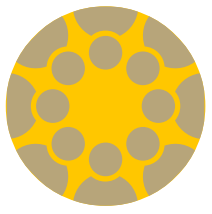


EXPAND ACCESS FOR STUDENTS

HOUSING Provide an ecosystem of housing options

AMENITIES Develop services and amenities with appealing and gathering-friendly spaces

WELLNESS Provide a hub for health and wellness on campus



BUILD COMMUNITY

CONNECT Address the local community's needs and characteristics

INVITE Create outdoor gathering spaces that the community can easily recognize and know to visit

EQUIP Activate Tacoma Avenue as a community resource



INNOVATION AND SCHOLARSHIP

GROWTH Build new state-of-the-art facilities for growing academic programs

COLLABORATION Boost creativity and engagement through more breakout and hang-out spaces

INNOVATION Create hybrid learning areas to support a flexible learning environment



DIVERSITY AND EQUITY

ACCESSIBLE Utilize accessible pathways to create a connected campus

INCLUSIVE Provide more options and variety of spaces for people to linger

REPRESENTATIVE Leverage Tacoma's diversity in design



VITALITY

IDENTITY Create inviting boundaries to establish a clear sense of arrival and celebrate iconic campus moments

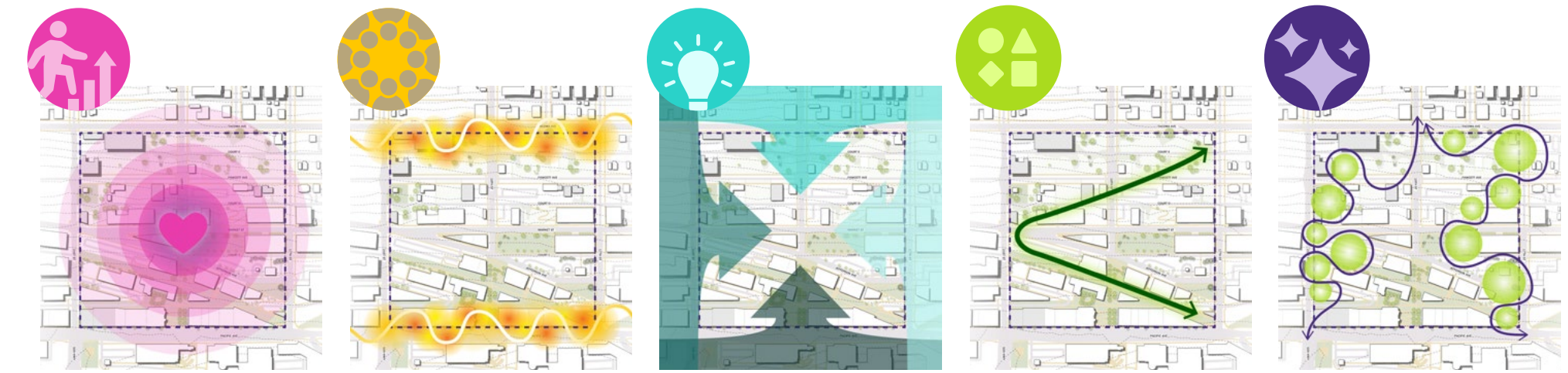
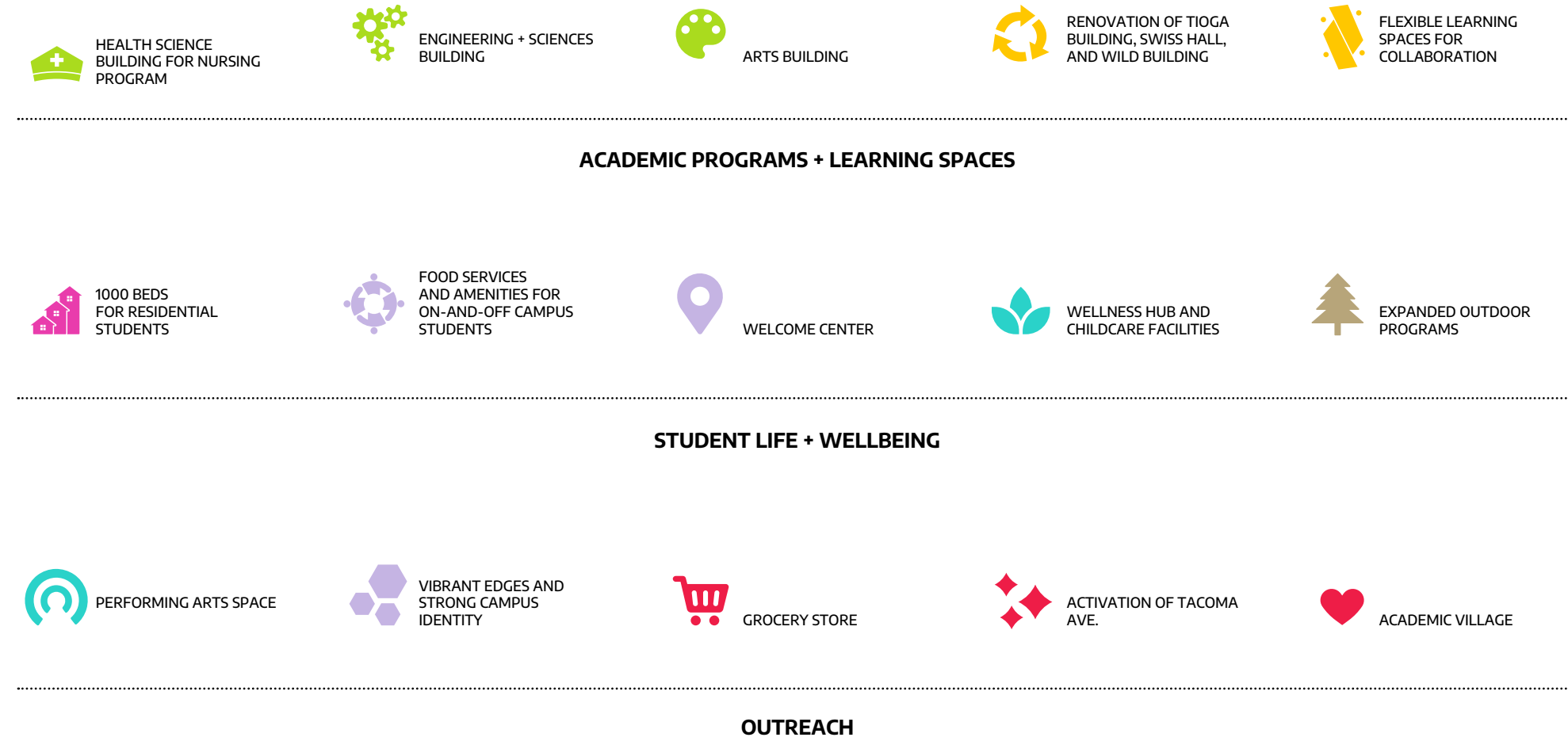
ACTIVE TRANSITIONS Capitalize on the topography for sticky transitions like stoops and terraces

SUSTAINABILITY Design new green building standards and integrated sustainability

From Mission to Vision
Based on the feedback sessions, we categorized the key needs and aspirations into the university's five Strategic Plan goals. This approach allows us to transition from mission to vision, creating a clear roadmap for future development.

Campus Wishlist

The University has identified key wishlist items that they would like to see incorporated into the master planning process.



Create a Campus Heart **Activate Tacoma Ave** **Leverage Partners** **Improve Access** **Welcoming Edges**

Next Steps

Through the interview process, we identified a clear consensus around several wishlist programs, which fall into three categories: supporting academic growth, enhancing student health and comfort, and leveraging the campus context to strengthen community connections.

The feedback received has already begun to reveal opportunities that can be incorporated into the master plan:

1. **Create a Campus Heart**
2. **Activate Tacoma Avenue**
3. **Leverage Community Partners**
4. **Improve Access**
5. **Welcoming Edges**

In the next stage of the project, we will define the adjacencies of these key needs to begin shaping the campus's future

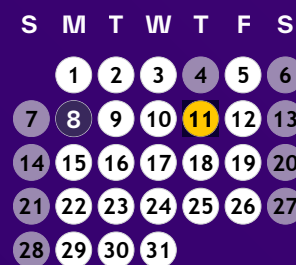


Project Milestones

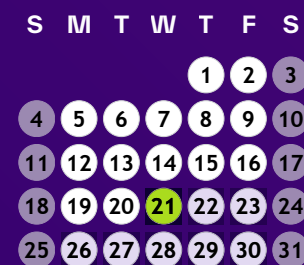
The Master Plan will be devised in three stages: Interviews and Programming, Planning Strategies and Programming, Planning Strategies and MP Development, and MP Refinement - Please look out for more invitations and **continue to be involved in the design process!**

2024

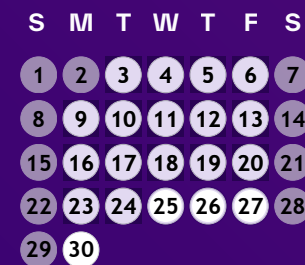
JULY



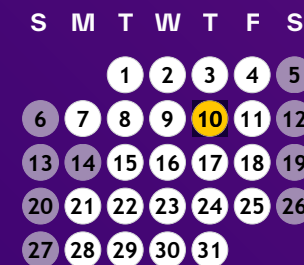
AUGUST



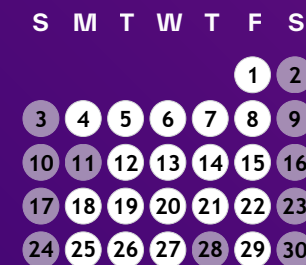
SEPTEMBER



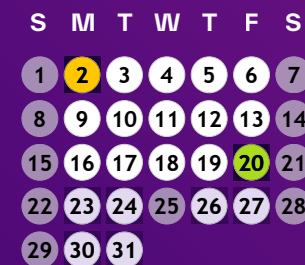
OCTOBER



NOVEMBER



DECEMBER



DEFINE NEEDS AND GOALS

INTERVIEWS + PROGRAMMING

6 weeks
7/08-8/21

REVIEW + APPROVAL

6 weeks
8/21-9/27

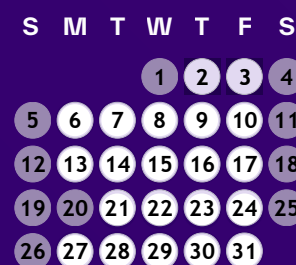
UNDERSTAND USES AND ADJACENCIES

PLANNING STRATEGIES + MASTER PLAN DEVELOPMENT

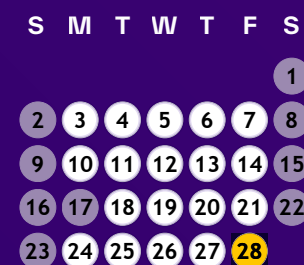
11 weeks
9/30-12/20

2025

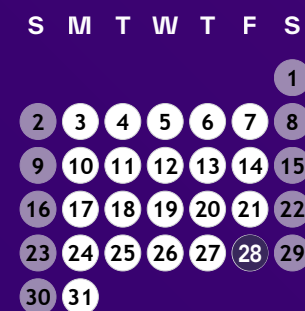
JANUARY



FEBRUARY



MARCH



DRIVE CONSENSUS

REVIEW + APPROVAL

10 weeks
12/23-2/28

MASTER PLAN REFINEMENT

4 weeks
3/3-3/28

- Key Meetings and Feedback
- Draft Submissions
- Final Submission
- Review Periods
- Design Periods
- Feedback Periods