

W

UNIVERSITY *of* WASHINGTON

?

????? ???? ???? ? ?

Encyclopedia of **PUGET SOUND**

Topics Science Review Species Library Maps / GIS Archive News Blog Get Involved

Search



OUR SCOPE

The watershed

Puget Sound is fed by its many water sources, from high elevation snowmelt to floodplains and wetlands. Articles and accounts feature terrestrial species and environments, as well as nearshore and marine systems. [View watershed boundaries.](#)



TOPIC AREAS

Browse the encyclopedia

Biology

Chemistry

Physical Environment

Social and Economic Sciences

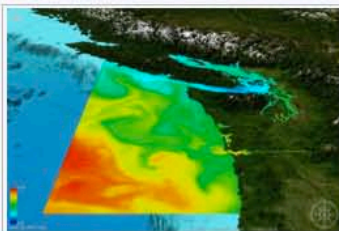
Ecosystem-Based Management

Climate Change

Geography

RECENTLY ADDED

Water Quality Model Development and Application in Puget Sound and Georgia Basin



Summary information was compiled in Winter 2013 by the modeling workgroup of the Puget Sound Ecosystem Monitoring Program (PSEMP). It describes several ecosystem modeling efforts in the region.

[MORE ARTICLES >](#)

FEATURE

Caffeine and other tracers used to target wastewater pollution

Your daily coffee habit may someday help identify sources of bacterial pollution in Puget Sound. Researchers at the University of Washington Puget Sound Institute are developing a new tool for targeting leaky septic tanks that may have broader implications for studies of emerging contaminants.



[Read the article >](#)

FRESHWATER @ UW

Freshwater Research and Learning at the University of Washington

[home](#) / [about](#) / [events](#) / [news](#) / [courses](#) / [projects](#) / [freshwater experts](#) / [freshwater initiative](#)

[Home](#) / [The FWI Vision](#) / [Apply](#)

APPLY

Faculty Cluster Hire in Freshwater Sciences

Four Full-time Assistant/Associate Professor Positions

[Print-Friendly PDF](#)

The University of Washington seeks four new full-time, nine-month, tenure track faculty members to develop high impact research, teaching, and outreach as part of a new Freshwater Sciences Initiative on the Seattle and Tacoma campuses. Humanity is facing a grand challenge in the future sustainability of freshwater resources. UW's Freshwater Sciences Initiative is intended to enhance our scientific, engineering, and educational capacity to answer this challenge by advancing the area of water resource management and conservation, and educating the next generation of scientists, managers, and policy makers. These hires are a key component of a larger initiative developed by the College of the Environment, the College of Engineering, and UW Tacoma's Environmental Science program to enhance and coordinate existing research and education strengths in freshwater sciences at UW.



Photo: Doug Plummer

University of Washington faculty engage in teaching, research, and service. Candidates should demonstrate strong disciplinary backgrounds in freshwater science sub-disciplines and show evidence of the potential to develop successful multidisciplinary collaborations addressing pressing scientific and societal issues in freshwater resources. Their research records should reflect high scholarship, the ability to attract funding, relevance to socio-cultural or socio-economic impacts, and connections across scales and disciplines. We are particularly interested in candidates with expertise in the following sub-disciplines: eco-hydrology, watershed/river ecology and restoration, fluvial geomorphology, urban water quality, aquatic biogeochemistry, and continental hydrology, although we also encourage applications from other biological and physical sub-disciplines of freshwater sciences. Successful candidates will have a strong interest in teaching and mentoring, especially contributing to innovative undergraduate and graduate curricula that integrate across freshwater science disciplines. The provision of fresh water defines the rights and privileges of individuals, societies, and nations. We are particularly interested in candidates whose research, teaching and service has prepared them to contribute to our commitment to engagement and inclusion of culturally diverse audiences in the freshwater sciences, and in higher education more generally. Appointments will be made at Assistant Professor or, in exceptional circumstances, Associate Professor, in the School of Aquatic and Fishery Sciences, the School of Environmental and Forest Sciences, the Department of Earth and Space Sciences, the School of Oceanography, the Department of Civil and Environmental Engineering, or in the Environmental Science program on UW's urban-serving campus in Tacoma, depending on the background of each candidate. Joint appointments between these partnering units will be developed to best suit the interests of successful candidates and to encourage multi-disciplinary research and teaching. Primary appointments will be made in one of the above academic units, but successful applicants are expected to closely collaborate and work as an interdisciplinary cluster.



MUNICIPAL
Resource Program

BUSINESS
Resource Program

LOW IMPACT
Development Program

TAPE
Emerging Technologies

RESOURCES
Library



Emerging Technologies - TAPE

Read about the latest TAPE-approved technologies and functionally equivalent BMPs approved by Ecology for permittee use.

STORMWATER CHANNEL



Adding Pollutant Sources to Your Site Map

[VIEW ALL](#)

JOIN OUR EMAIL LIST

 [SIGN UP](#)

UPCOMING EVENTS

APR 30 **University Of Washington Water Symposium**
2013 University of Washington Water Symposium Tuesday, April 30, 2013 9:00 am - 5:30 pm Husky Union Bui...[More](#)

MAY 1 **NEBC Luncheon - Using LID For Industrial Stormwater Management**
Wednesday, May 1 11:30 am - 1:00 pm NEBC - Northwest Environmental Business Council OI...[More](#)

MAY 7 **WSU LID Technical Workshop Series: Green Roof, Low Impact Foundations & Rain Water Collection**
For complete details and to register, visit the Workshop Series website. ABOUT THE WORKS...[More](#)

[VIEW ALL](#)

This list of stormwater-related events and workshops is compiled as a free service. Washington Stormwater Center does not promote, endorse, or otherwise recommend any of the companies, individuals, or organizations presented here.

WASHINGTON STORMWATER CENTER

Washington Stormwater Center serves NPDES permittees and stormwater managers as they navigate the complexities and challenges of stormwater management. We provide tools for stormwater management by supporting municipalities, stormwater permittees, and businesses in their efforts to control stormwater and protect water quality. [Read more about our history.](#)

Directions for meetings at the Washington Stormwater Center: Washington State University Puyallup Research and Extension Center or University of Washington Tacoma - Center for Urban Waters.

As part of our outreach efforts, we are now on Facebook and Twitter. Follow us to stay informed about upcoming events and activities!



CURRENT NEWS

4.8.13 "TS4" - The Transportation Separate Storm Sewer System
U.S. EPA Rulemaking - A Look Down the Road

3.29.13 IDDE Field Screening Manual Public Review Draft
Comments due April 15

3.26.13 Fix Car Leaks - And Protect The Puget Sound
Discounts available during April!

3.22.13 Ecology Begins Review Of Bioretention Monitoring Data

[VIEW ALL](#)

Municipal
Training Resources

Business
Stormwater Principles

Low Impact Development
Workshops and Education

Emerging Technologies
TAPE Program

