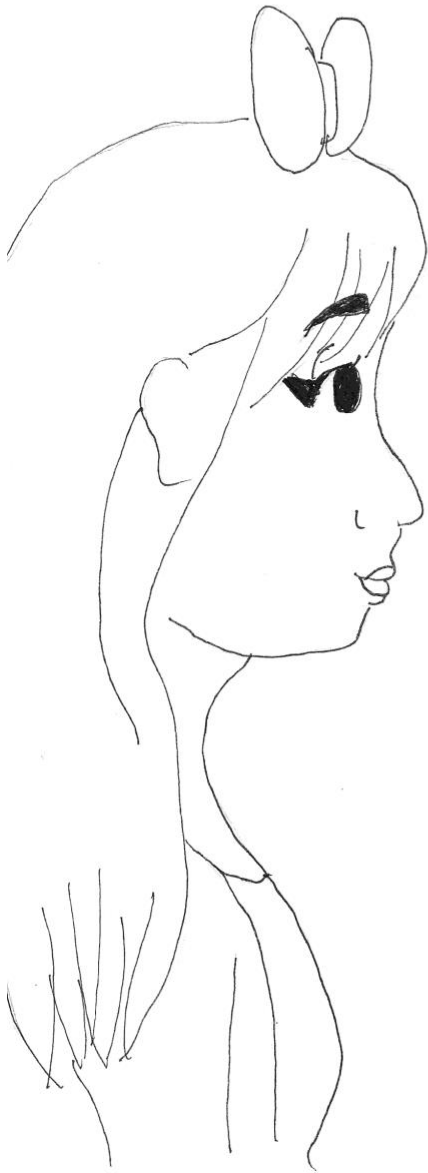


99% COMPATIBLE

---



Story and  
art by  
Shiloah  
Pepin



## Artist Statement

*99% Compatible* starts just as comics of tradition have started: a piece of paper, a mechanical pencil, and an idea that has to be shared. I started this project with the idea that attraction is not always what we might think it is. I chose my medium to be pencil and pen because that is what I am most comfortable with and I have always loved hand-drawn art. There is something about hand-drawing that allows me to feel more connected to my art.

I utilized different elements from various comic genres to create my comic. First, this comic is hand-drawn and uses ink on paper like traditional hand-drawn comics. It's drawn in black and white like that typically of Japanese manga. My style of comic is also reminiscent of styles you might find online like on comic apps like Webtoon.

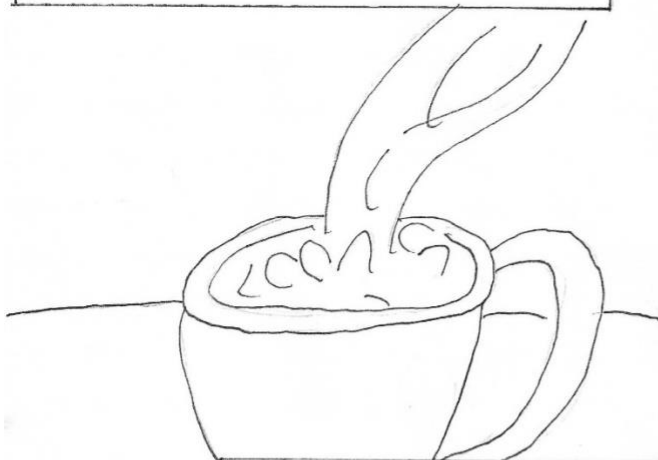
The inspiration for *99% Compatible* started with my own experience of compatibility as a queer person. Through my own experience, I've learned that sometimes who we are or aren't attracted to isn't always set in stone. Shea's journey is a representation of love-finding and this journey will not always lead you down the path that you expect it to.

© Shiloah Pepin  
12/9/2020



I'VE HAD THE ABILITY<sup>ooo</sup>

FOR AS LONG AS I  
CAN REMEMBER<sup>ooo</sup>



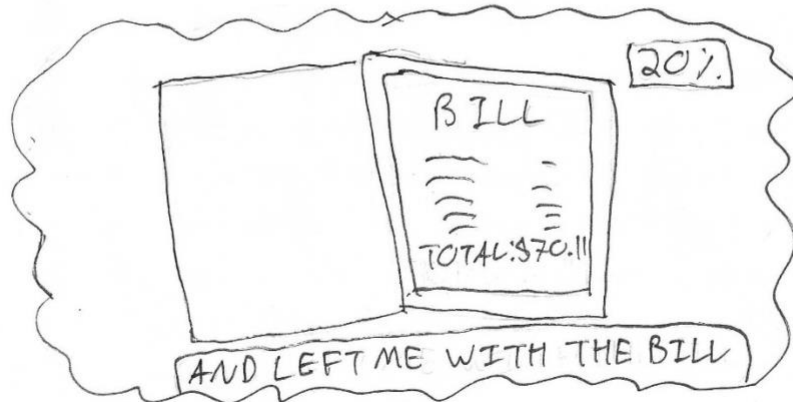
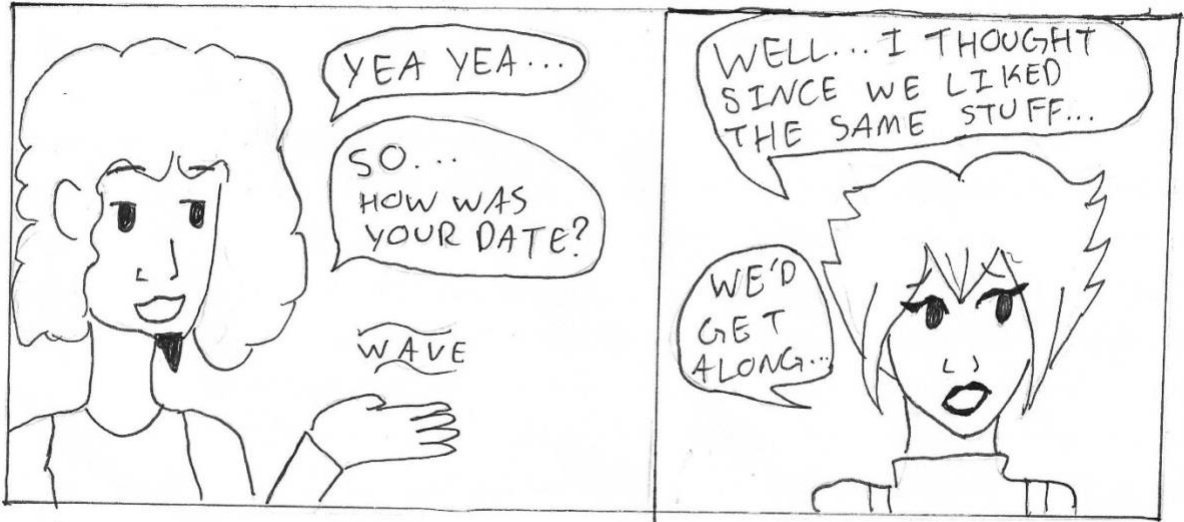
TO SEE HOW COMPATIBLE  
I AM WITH SOMEONE.

IT MAY BE A COOL PARTY TRICK.

BUT IT'S  
NEVER  
HELPED  
ME MUCH







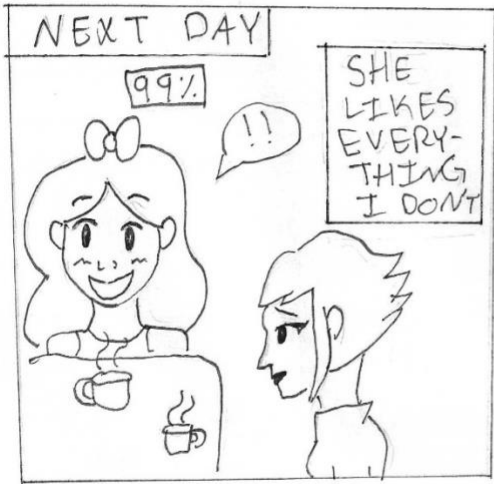




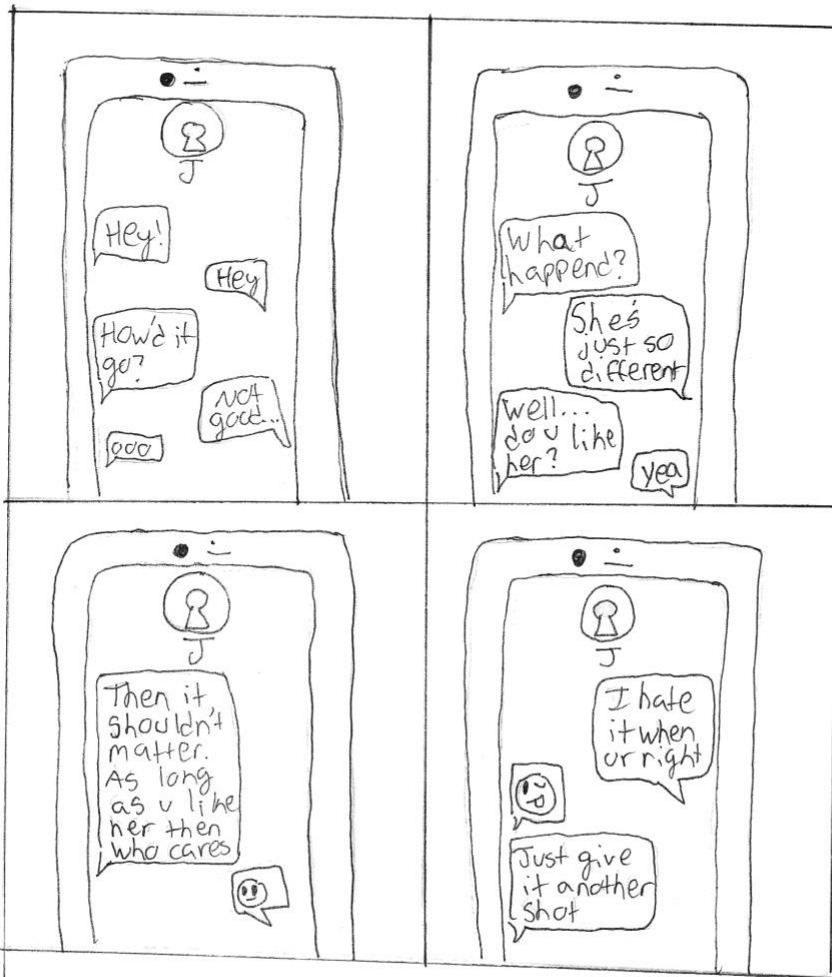
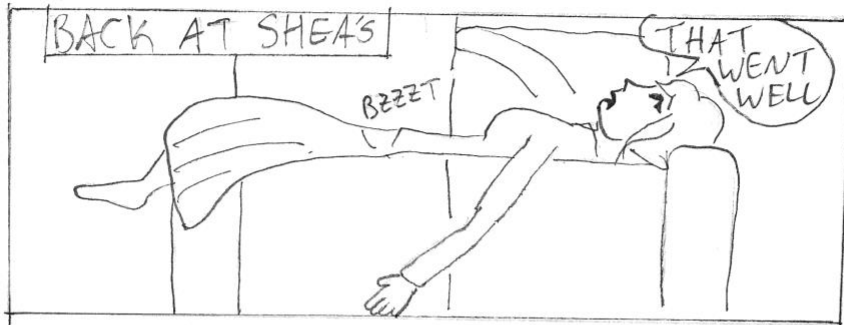




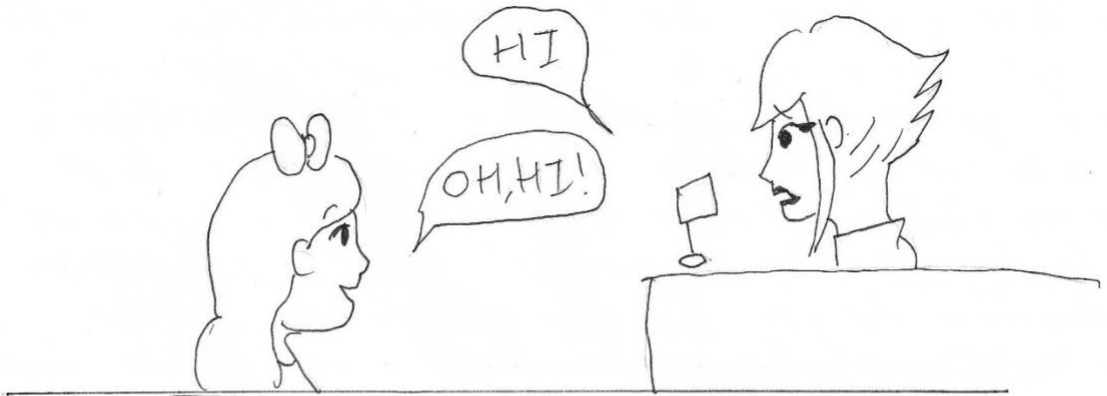








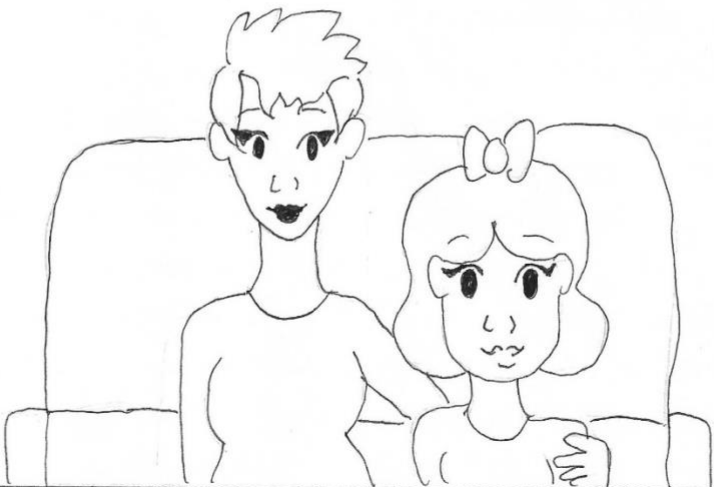




THE NEXT DAY



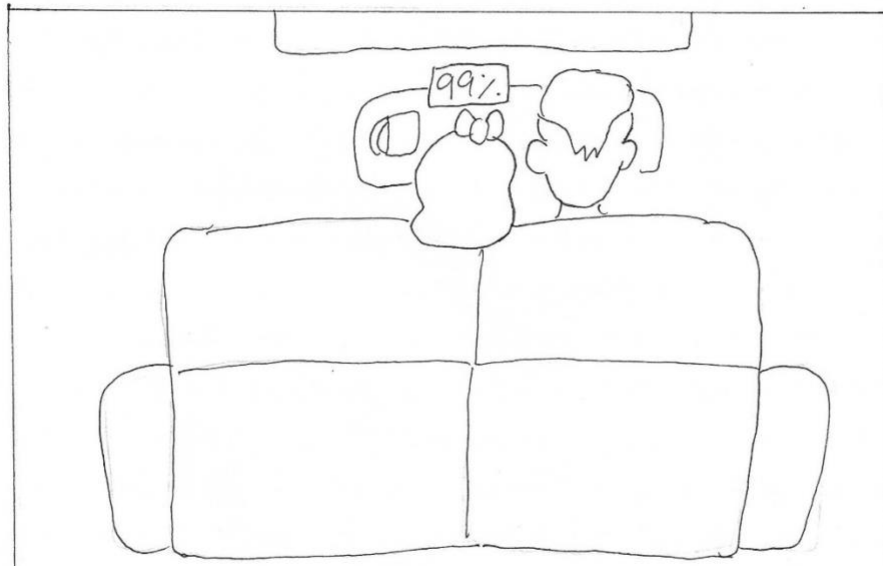
A FEW MONTHS  
LATER



I'M SO HAPPY AUTUMN GAVE ME A  
SECOND CHANCE







WE MAY BE OPPOSITES...

BUT WE ARE  
EXTREMELY  
COMPATIBLE

99%





*Li*  
16